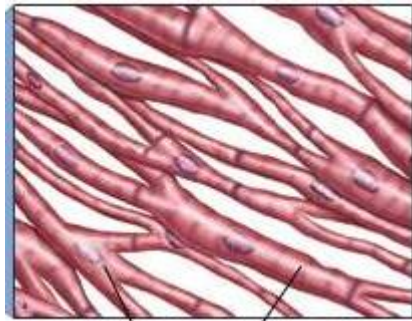
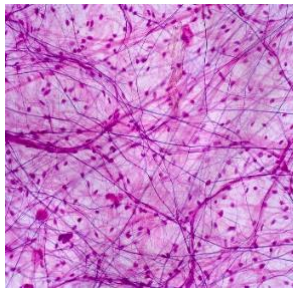


Tissues

Fill in the blanks

1. The live tissue is known as
2. Group of cells together will join to make
3. The growth of meristematic tissue takes place at.....
4. the function of phloem
5. The pigment which is present in chlorenchyma.....

Identify the pictures given and write down their functions



Answer the following

- ✓ .Briefly describe meristematic tissue and the types of meristematic tissue
- ✓ Sclerenchyma fibres are very hard explain
- ✓ Briefly explain connective tissue
- ✓ Draw structure of neuron and label its parts
- ✓ Write a note on voluntary and involuntary muscles

Write the schematic representation of.....

1. Animal tissues

2. Plant tissues

.....